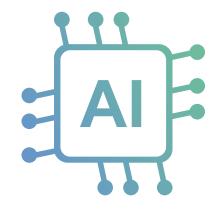


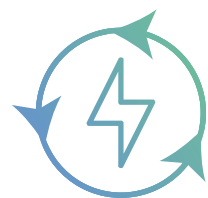
SAFETY STRATEGY

Our EMS employs advanced software-driven security mechanisms to ensure real-time monitoring, intelligent diagnostics, and automated risk prevention, significantly reducing failure risks.



AI-driven diagnostics and predictive maintenance

The AI proactively monitors voltage fluctuations, current anomalies, temperature variations, and insulation resistance changes, issuing warnings, and implementing corrections before failures occur.



Autonomous fault detection and automatic recovery

Real-time battery voltage monitoring ensures stable operation. The BMS automatically adjusts current output to prevent overcharging and over-discharging.



Remote monitoring and cybersecurity protection

Operators can access system status and remotely manage devices via a web console or mobile app anytime, anywhere.



Immediate fire alerts and emergency response

Utilizes smoke, thermal, and gas sensors to detect potential fire risks in real time.

Power Your Success



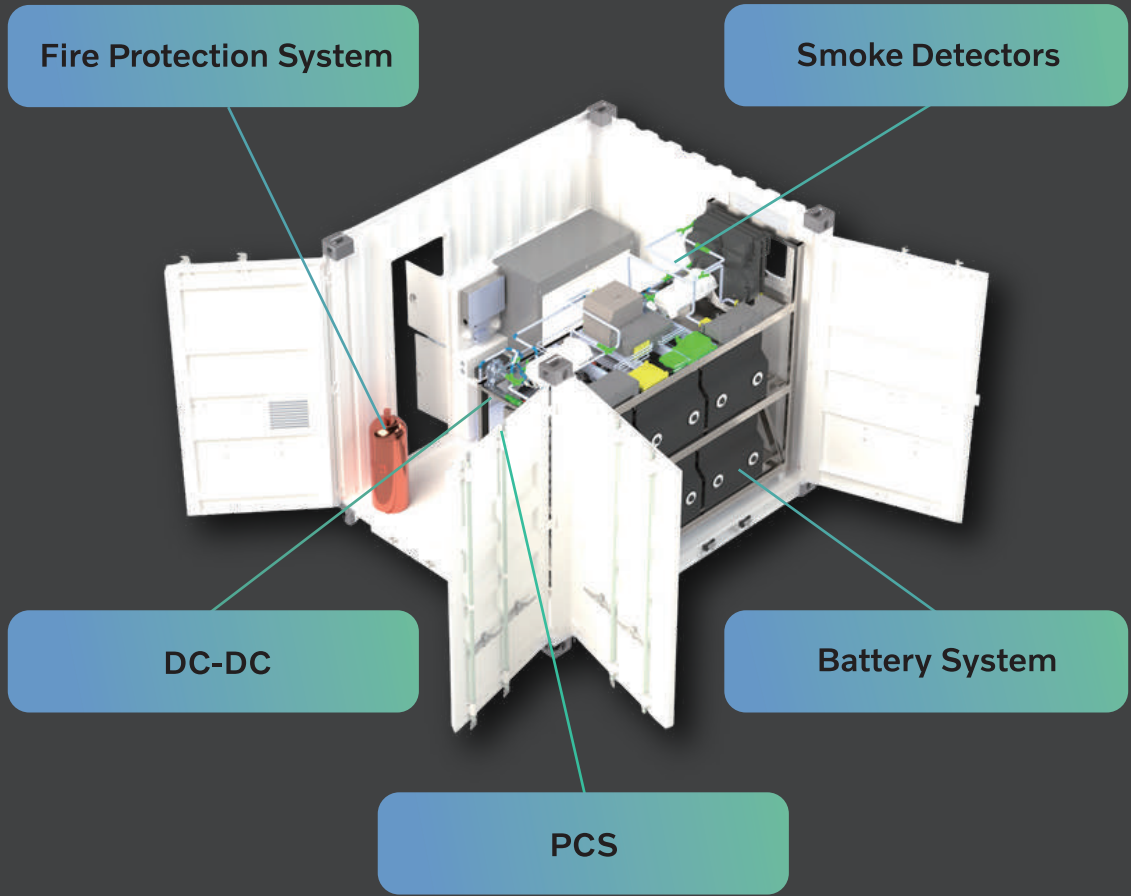
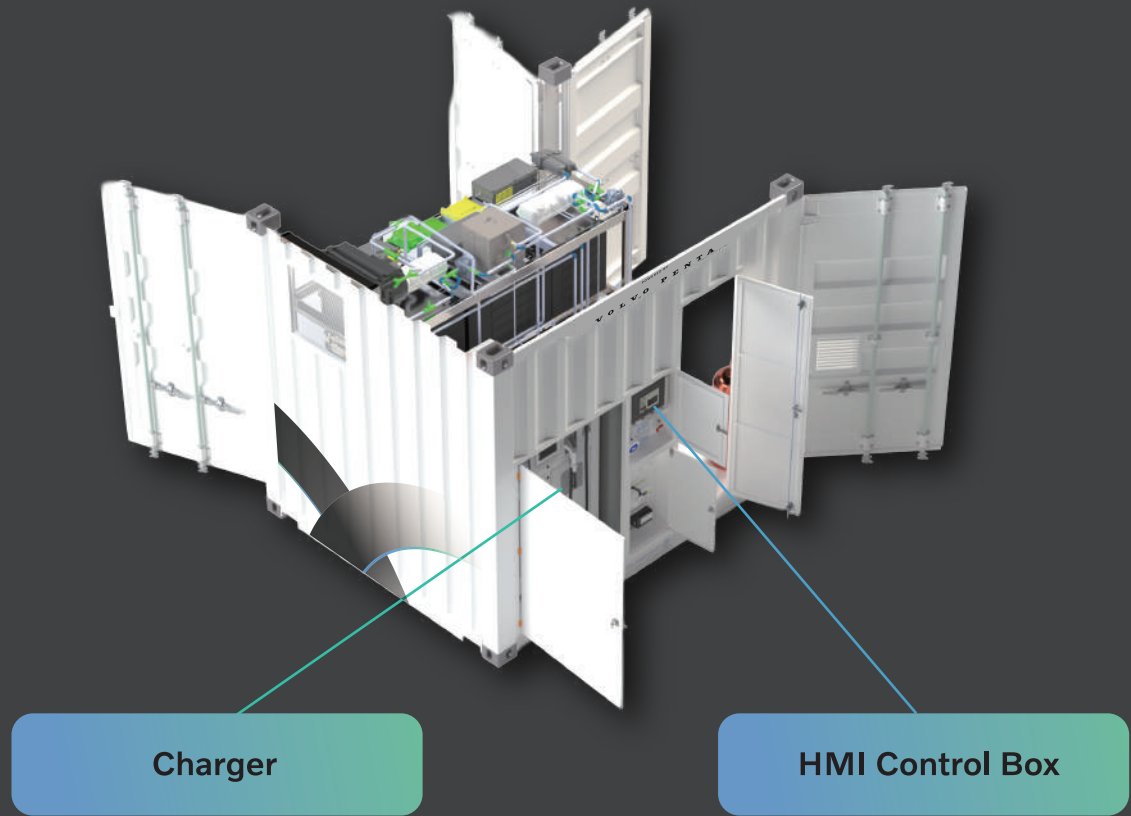
SEETEL

MOBILE CHARGER
with Battery 540 kWh



POWERED BY

**VOLVO
PENTA**



System Specification	
Battery Chemistry	NCA (Nickel Cobalt Aluminum) – Cylindrical Cell
Total Installed Energy	540 kWh (90 kWh * 6)
Rated Capacity	578.76 Ah
System Voltage (Min / Nom / Max)	500 V / 660 V / 750 V
Continuous Charging Rate	0.5 C
Continuous Discharging Rate	1 C
Ambient Operating Temperature	-20°C to + 40°C
Max Operating Altitude	3,000 meters
Cooling System Type	Compressor (Active Cooling Unit)
Fire Suppression System	Aerosol Fire Extinguishers
AC Input Voltage	220 V / 380 V AC, 3-phase, 50–60 Hz ± 15 %
Charging Time	Approx. 7–8 hrs at 90 A, 410 V, 3-phase
Input Plug Type	CEE plug 100A
Container Dimension (L x W x H)	3000 x 2200 x 2600 mm

Charger	
Max Power	180 kW
Simultaneous Output	Balance Distribute
Efficiency	> 94 %
Charger Plug Type	CCS2

Container	
Container Weight	1,450 kg

Weight of BESS Components			
Battery*6	3,198 kg	Battery Rack	470 kg
Heater_BESS	5.7 kg	Expansion Tank	2.53 kg
Control Unit-HCPU-ECM4_BESS	1.9 kg	Control Unit-TGW3_BESS	1.2 kg
Cooling Package_BESS	50 kg	DC-DC_BESS	14.9 kg
Junction Box	1.27 kg	Pump Unit_BESS	3.2 kg
DC-2	300 kg	125 kW PCS	70 kg
INP-DCDC-100/0.3-W-1-B2-OS	25 kg	Power Control Panel	20 kg
Charger Frame	80 kg	HMI Panel Assembly	15 kg
Total	5708.7 kg		

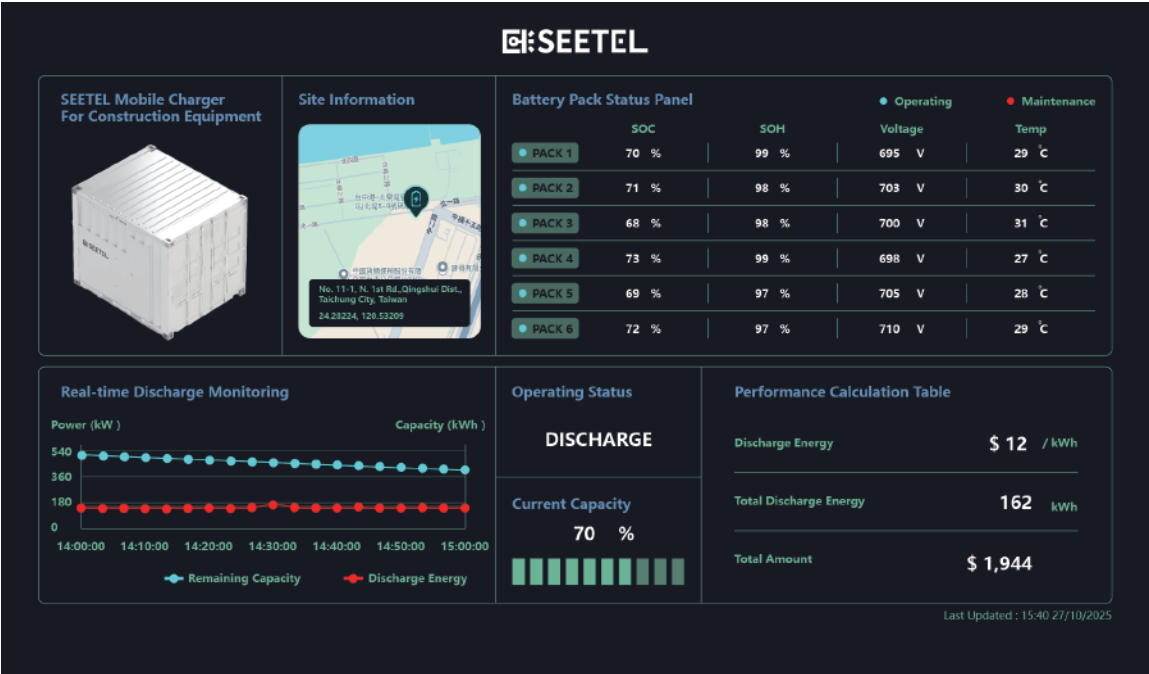
Notice: This is not a final specification. Some parametric limits are subject to change.

Portable and Easy-to-use



It is portable, easy-to-use and can charge everything from Volvo compact electric machines to other electrical equipment on-site.

Smart EMS, Swift Response



Equipped with real-time insights and adaptive learning, EMS accelerates energy forecasting and optimizes dispatch with unmatched precision.